

HYDRA Re-Gen



Regenerates Drain Fields & Soakaways



HYDRA®

Features & Advantages

- ◆ 3 in 1 treatment that boosts bacteria, reduces malodours and stops slow running drains.
- ◆ Digests fats and other floating material that clog pipes and the disposal field .
- ◆ Uses natural, safe bacteria to digest and consume FOGs.
- ◆ Contains natural growth enhancers and bio-stimulants to maximise bacteria action.
- ◆ Significantly reduces malodours (Hydrogen sulphide).
- ◆ Suitable for all septic tanks sizes.
- ◆ Aids the growth of the soils natural bacteria in soak away field.
- ◆ Restores flow to slow systems.
- ◆ Reduces effluent COD/BOD levels by up to 80%.
- ◆ Easy to use and cost effective, no measuring or waste.
- ◆ Increases pump out intervals by reducing sludge formation.

The Problem



- ◆ Ground movement (dips) near the septic tank or soak-away drain-field.
- ◆ Overflows into shower or bath when the sink is discharged.

Anaerobic is the bacterial condition and action which occurs when there is not a plentiful supply of air or oxygen i.e. a typical septic tank.

In this anaerobic condition the bacteria produce foul smelling and dangerous hydrogen sulphide gas (H₂S) and sulphides.

This same anaerobic bacteria secrete a bio slime



which over time clogs the porous pipework and surrounding soil making it impossible for liquid to soak away.

These combined factors greatly impact bio film growth and field flow loss.

With this understanding, solving the problems biologically is not as difficult as once believed.

Signs of a Failed Septic Tank Soak-Away

- ◆ Septic tank effluent surfacing on your land.
- ◆ Strong or bad odours coming from the septic tank or drains.
- ◆ Pollution of nearby ditches or streams with septic tank effluent.
- ◆ Slow flushing of toilets and gurgling in the drains/ toilet overflowing.
- ◆ Overflow at washing machine hook-up.



The Solution

Hydra Re-Gen switches the facultative bacteria to an aerobic state thereby greatly increasing efficiency and preventing the production of Hydrogen sulphide gas.

In the aerobic condition these bacteria produce odourless carbon dioxide (CO₂).

Hydra Re-Gen contains vast quantities of fast and slow release oxygen agents and enzymes these have a unique natural reaction which rapidly boosts the natural bacteria in your system.

This unique combination allows the facultative bacteria which is present in all human waste to switch from anaerobic to super efficient aerobic bacteria which is up to twenty times more efficient in breaking down sewage.



Acting rapidly this fortified bacteria breaks down organic matter and clogging sulphides without killing the helpful bacteria in your septic system.

Hydra Re-Gen should be dosed directly into the into the leach field via the distribution box to prevent slow running.

If you do not have a distribution box, add Hydra Re-Gen via the outlet pipe.

How To Use

Use blue measuring scoop supplied

1 heaped spoon = 40g

Slow Running or Blocked Drain-field

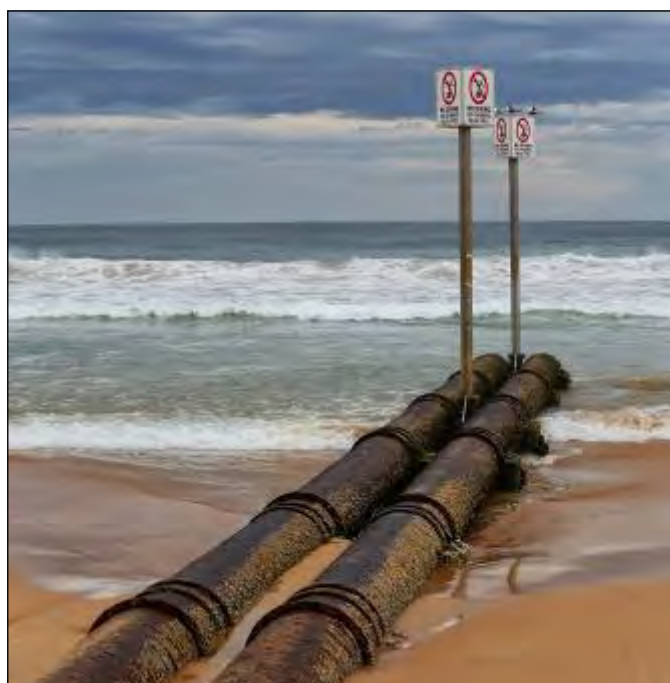
Remove standing water.

Add 500g Hydra Re-Gen to 20 litres of water and add via distribution box after septic tank.

If you do not have a distribution box, add Hydra Re-Gen via the outlet pipe, this is normally an open ended t-piece.

Push a large flexible through this open into the leach field as far as possible, then using a funnel pour this slurry into the tube.

Repeat weekly until clear.



Laboratory Facilities

Hydra International Ltd.'s Research & Development Laboratories are a hub of activity where new products are developed and formulated. We have working relationships with our raw material suppliers, many of these suppliers are major world-wide chemical manufacturers with their own development laboratories.

As a company we are well known in the chemical industry for being receptive to cutting edge new chemicals which can be incorporated into our products to achieve performance advantages. An important part of the International Standards that we hold is that of constant improvement. We show that we have achieved this at every independent audit.



Hydra International Limited

8 Carters Lane, Kiln Farm, Milton Keynes MK11 3ER, U.K.

+44 (0)1908-265889 | sales@hydra-int.com

www.hydra-int.com

